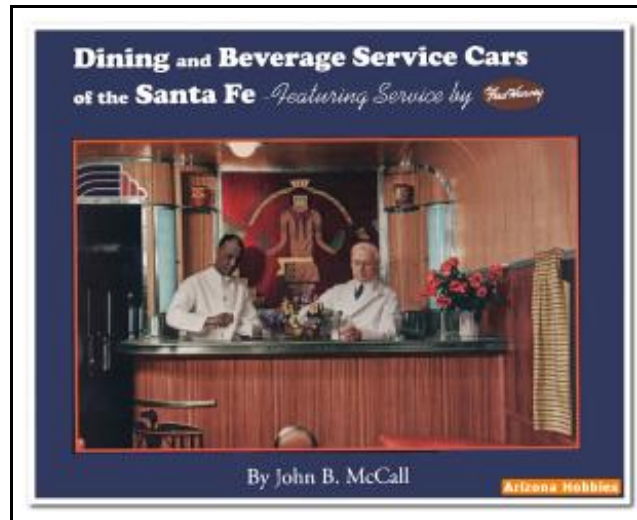


Santa Fe Railway Railway Dining and Beverage Service Cars



Filesize: 9.16 MB

Reviews

Most of these ebook is the perfect publication accessible. It is writter in easy terms and not difficult to understand. It is extremely difficult to leave it before concluding, once you begin to read the book.
(Anastasia Kihn)

SANTA FE RAILWAY RAILWAY DINING AND BEVERAGE SERVICE CARS



To save **Santa Fe Railway Railway Dining and Beverage Service Cars** eBook, you should click the web link beneath and save the file or have accessibility to other information which might be related to SANTA FE RAILWAY RAILWAY DINING AND BEVERAGE SERVICE CARS book.

Santa Fe Railway Railway HMS, 2006. hardcover. Book Condition: New. Dining and Beverage Service Cars of the Santa Fe by John B. McCall For over 90 years the names of the Santa Fe Railway and Fred Harvey were synonymous passenger train and hospitality of the finest quality. After the partnership adopted the persona of the of the Native American cultures of the Southwest, their services were carried on with a style that became legendary. In this Volume Number 3 in the Santa Fe Railway Passenger Car Reference Series, noted Santa Fe authority John B. McCall not only details the dining and beverage service cars once owned by Santa Fe, but also explores that unique partnership between Santa Fe and Fred Harvey, first begun in 1876 with a Harvey Lunchroom, expanded to Harvey resort hotels after the turn of the 20th century, thence to luxury transcontinental train service culminating in the lightweight extra-fare Super Chief of 1937. Richly illustrated with hundreds of photographs and period menus and ephemera, many in color, Dining and Beverage Service Cars of she Santa Fe - Featuring Service by Fred Harvey - seeks to distill within the covers of one Volume the very essence of what made Santa Fe a great railroad. Contents: Foreword and Introduction, pp. 7-21: HEAVYWEIGHT CARS: Composite and Buffet Library Cars, pp. 24-62; Dining Cars, pp. 63-108; Lounge Cars, pp. 109-132; Parlor Cars, pp. 133-150; Cafe Observation Cars, pp. 151-177; LIGHTWEIGHT CARS Baggage Lounge Cars, pp. 180-185; Dining Cars, pp. 186-214; Lounge and Parlor Observation Cars, pp. 215-267; SERVICE BY FRED HARVEY .with Service by Fred Harvey, pp. 268-310; Epilogue, pg. 311; Appendix: Selected China and Silver Patterns, pp. 312-331; Santa Fe Passenger Car External Paint Schemes, pp. 332-333; Pullman Sleeping Cars Owned (1/2 interest) to January, 1889. Santa Fe Railway Historical...



[Read Santa Fe Railway Railway Dining and Beverage Service Cars Online](#)



[Download PDF Santa Fe Railway Railway Dining and Beverage Service Cars](#)

Relevant Books



[PDF] Art appreciation (travel services and hotel management professional services and management expertise secondary vocational education teaching materials supporting national planning book)(Chinese Edition)

Access the web link below to read "Art appreciation (travel services and hotel management professional services and management expertise secondary vocational education teaching materials supporting national planning book)(Chinese Edition)" PDF document.

[Read ePub »](#)



[PDF] Republic 3: The Gods of War

Access the web link below to read "Republic 3: The Gods of War" PDF document.

[Read ePub »](#)



[PDF] Conned

Access the web link below to read "Conned" PDF document.

[Read ePub »](#)



[PDF] Roadhouse Blues

Access the web link below to read "Roadhouse Blues" PDF document.

[Read ePub »](#)



[PDF] The Easter Story: Miniature Edition

Access the web link below to read "The Easter Story: Miniature Edition" PDF document.

[Read ePub »](#)



[PDF] Everything Your Baby Would Ask: If Only He or She Could Talk

Access the web link below to read "Everything Your Baby Would Ask: If Only He or She Could Talk" PDF document.

[Read ePub »](#)